

EQUIP. TYPE R390A/URR EXP. NO.

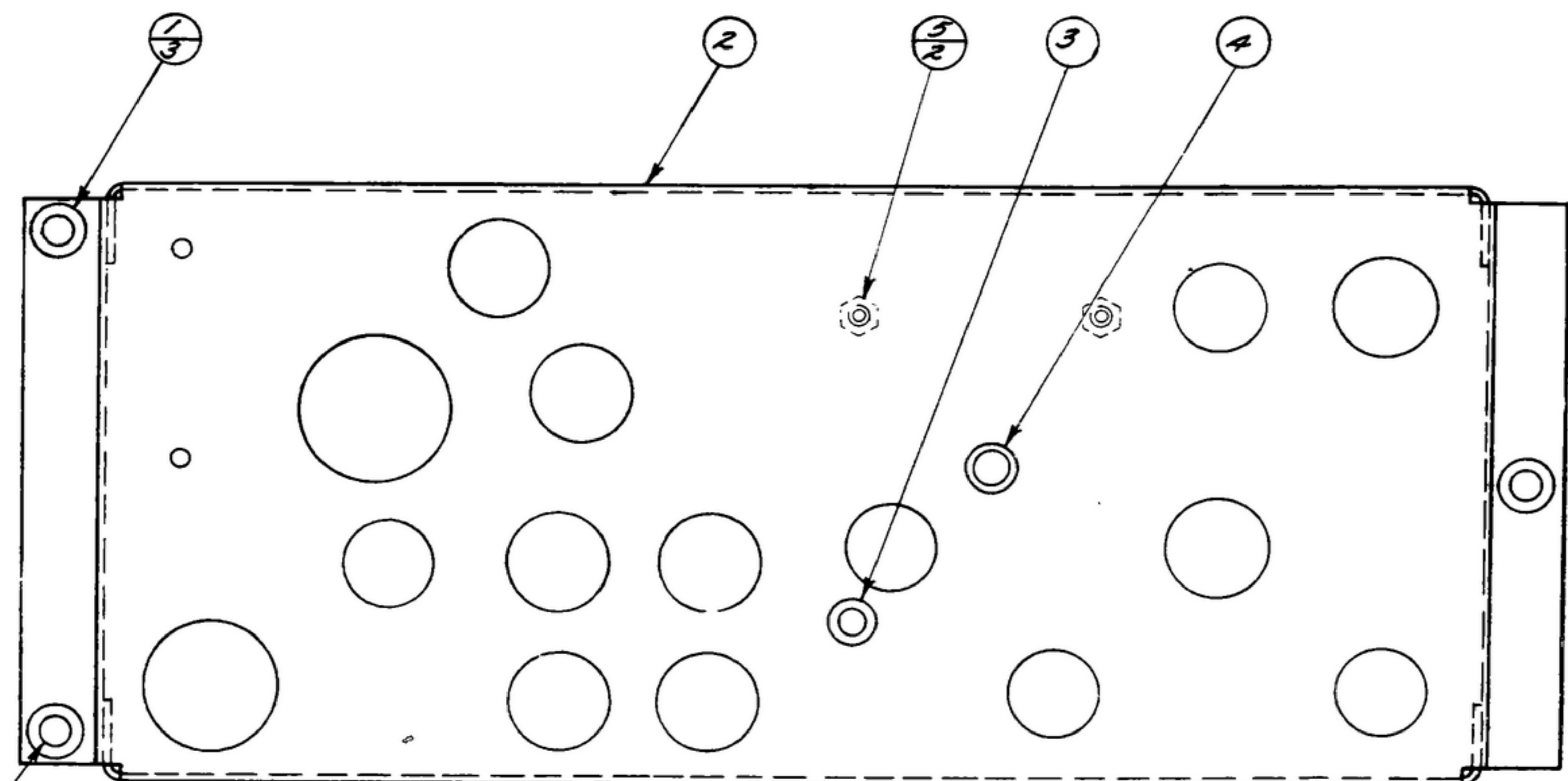
COL. 540 7572 009

NOTICE: WHEN GOVERNMENT DRAWINGS, SPECIFICATIONS, OR OTHER DATA ARE USED FOR ANY PURPOSE OTHER THAN IN CONNECTION WITH A DEFINITELY RELATED GOVERNMENT PROCUREMENT OPERATION, THE UNITED STATES GOVERNMENT THEREBY ASSUMES NO RESPONSIBILITY FOR ANY OBLIGATION WHATSOEVER; AND THE FACT THAT THE GOVERNMENT MAY HAVE FORMULATED, FURNISHED, OR IN ANY WAY SUPPLIED THE SAID DRAWINGS, SPECIFICATIONS, OR OTHER DATA IS NOT TO BE REGARDED BY IMPLICATION OR OTHERWISE AS IN ANY MANNER LICENSING THE HOLDER OR ANY OTHER PERSON OR CORPORATION, OR CONFERRING ANY RIGHTS OR PRIVILEGES TO MANUFACTURE, USE, OR SELL ANY PATENTED INVENTION THAT MAY IN ANY WAY BE RELATED THERETO.

THIS DOCUMENT HAS BEEN PROCURED BY THE GOVERNMENT AND MAY BE REPRODUCED AND USED IN CONNECTION WITH ANY GOVERNMENT PROCUREMENT OR MAINTENANCE OPERATION.

*FOR INFORMATION ONLY. CONTRACTOR MAY AT HIS OPTION DEVIATE FROM THESE PROCESS DETAILS.

REVISIONS			
SYM	DESCRIPTION	DATE	APPROVAL



2.495 MIN I.D. AFTER ASSY

- NOTES:
1. PRESS CAPTIVE BUSHINGS (1) INTO CHASSIS (2) FROM SIDE SHOWN.
 2. INSERT EYELETS (3 & 4) FROM SIDE SHOWN AND SPIN OR ROLL ON OPPOSITE SIDE. EYELETS MUST SHOW NO FRACTURE AFTER FORMING.
 3. IN ALL SPLIT BALLOONS TOP FIGURE IS MATERIAL LIST ITEM INDICATOR & BOTTOM FIGURE IS QUANTITY.

559-0281-003	5	2	SM-C-283166-8	NUT-INSERT CAPTIVE
559-0230-002	4	1	SM-B-283151	EYELET
559-0229-002	3	1	SM-B-283150	EYELET
558-0362-004	2	1	SM-D-249013	CHASSIS-I.F.
558-0224-002	1	3	SM-B-248875	BUSHING-CAPTIVE

COLLINS PART NO.	ITEM	REQD	PART NO.	DESCRIPTION	MATL	MATL SPEC
------------------	------	------	----------	-------------	------	-----------

LIST OF MATERIAL COLLINS PART NO. 558-0359-003

DRAWN <i>NUGEN</i>				CHECKED <i>Ch</i>	APPROVED	COLLINS-RADIO-00- -0000-0000-0000- 14214-PH-51-93 SIGNAL CORPS REVIEWED <i>PME</i> APPROVED <i>HLV</i> <i>PME</i> DATE <i>28 Dec 55</i> SCALE <i>1/1</i>	DEPARTMENT OF THE ARMY SIGNAL CORPS ENGINEERING LABORATORIES FORT MONMOUTH NEW JERSEY SM-C-249009
UNLESS OTHERWISE SPECIFIED: DECIMAL DIMENSIONS INCLUDING HOLE SIZES MAY VARY ±.005 FRACTIONAL DIMENSIONS INCLUDING HOLE SIZES MAY VARY ±1/64 MACHINED ANGLES MAY VARY ±.1° SHEARED ANGLES MAY VARY ±.25° BROKEN ANGLES MAY VARY ±.1° ECCENTRICITY BETWEEN ANY DIAMETERS ON THE SAME CENTERLINE SHALL NOT EXCEED .010 TOTAL INDICATOR READING. ALL DIMENSIONS ARE FINISH DIMENSIONS INCLUDING APPLIED FINISH AND ARE GIVEN IN INCHES.				CHASSIS ASSY-I.F.			
558-0363-001	+	SM-D-248875	SGD-248775				
COLLINS NO.	QTY	NEXT ASSY	USED ON				

APPLICATION

WHEN REFERRING TO THIS DRAWING STATE DRAWING NO., APPLICABLE ISSUE SYMBOL, IF ANY, AND DATE